

Detection and attribution of flow and sediment fluxes in the Nile basin

Albert Nkwasa¹, Schlemm, Annika¹, Celray James Chawanda¹, Job Ekolu², Ann van Griensven^{1,3}

¹ Hydrology and Hydraulic Engineering Department, Vrije Universiteit Brussel (VUB), 1050 Brussel, Belgium

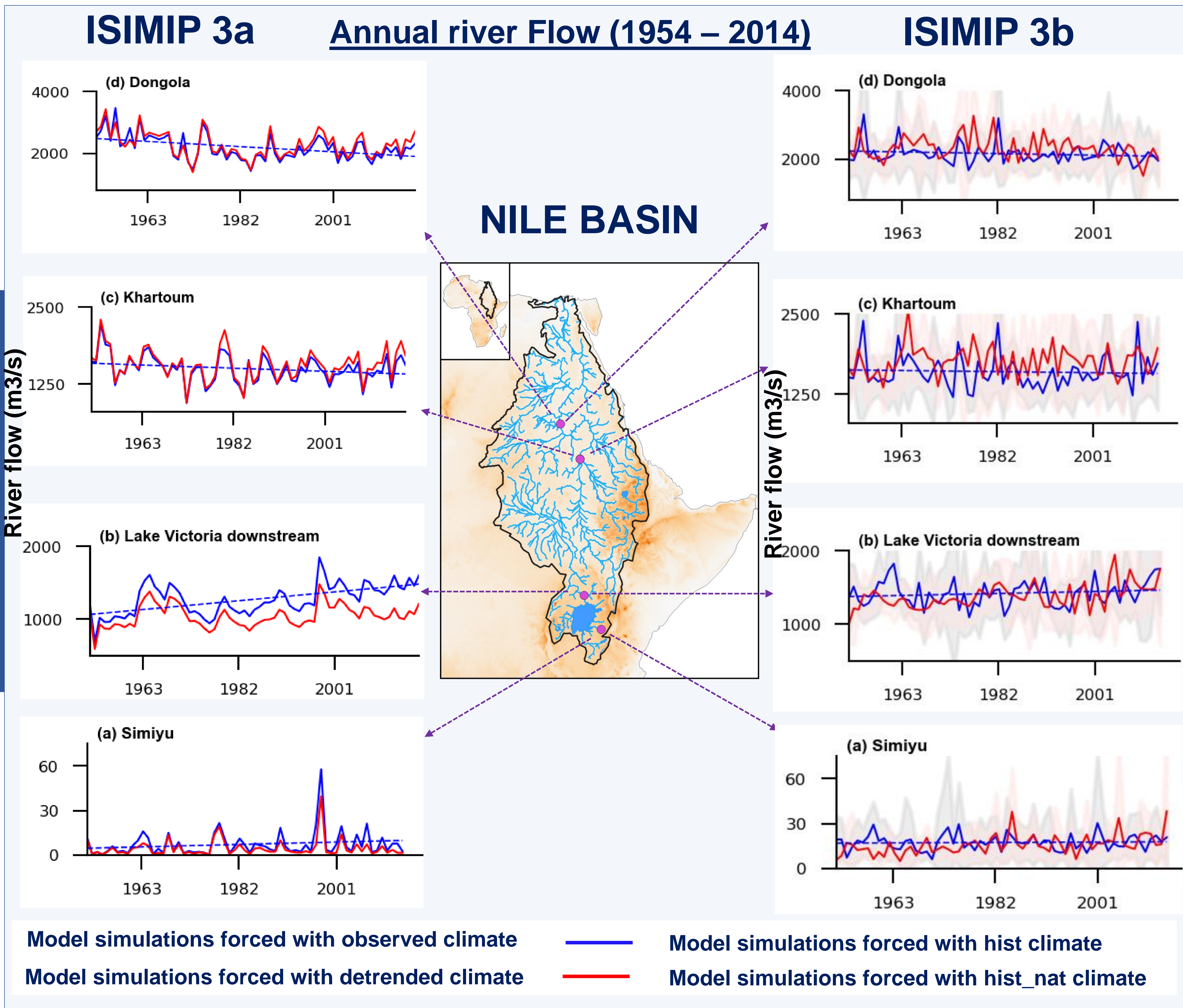
² Centre for Agroecology, Water and Resilience (CAWR), Coventry University, Coventry, UK

³ Water Science & Engineering Department, IHE Delft Institute for Water Education, 2611 AX Delft, The Netherlands

Concept

Studies have reported different contemporary flow regimes within the Nile basin. Here, we assess whether historical river flow & sediment trends in the basin can be attributed to historical climate change.

Preliminary Results



Method Setup

- Regionally Calibrated SWAT+ hydrological model
- Calibrated model driven by ISIMIP 3a & 3b climate data
- Statistical analysis e.g MK trend tests & attribution tests



©Authors. All rights reserved

albert.nkwasa@vub.be



@nkwasa99