

EUROPEAN CLIMATE RISK ASSESSMENT

Building resilience of
European societies to
climate change risks

ISIMIP Interactive Viewer for the European Climate Risk
Assessment - beta version

© Igor Popovic, Climate Change PIX /EEA



EU policy drive on climate change adaptation

2021 EU Strategy on Adaptation to Climate Change

Smarter, swifter and more systematic adaptation



Improve knowledge of climate impacts and adaptation solutions



Step-up adaptation planning and **climate risk assessments**



Accelerate **adaptation action**



Help to strengthen **climate resilience** on a global scale

EUCRA objective:

set priorities for adaptation in Europe

Main features and added policy value

An assessment of key current and future climate risks in Europe



Fast-track, to be published in **April 2024**



Expert-driven and evidence-based



Involving the European Commission and other key stakeholders



Identifying key risks per system sector



and across systems and sectors



Identifying priorities for action

Use of interactive tools

Planned products

EUCRA report

Executive summary
(input to
planned Commission
Communication)

Interactive data viewers

Sectoral policy briefs

Different lines of evidences

Quantitative



- **Climate data and climate scenarios**
e.g. European Climate Data Explorer, C3S, IPCC Interactive Atlas
- **Socio-economic data & event databases**
e.g. DKMKC Risk Data Hub, Eurostat database
- **Climate change impacts projections**
e.g. PESETA IV, COACCH, ISIMIP
- **Socio-economic scenarios**

Qualitative



- **Literature reviews**
e.g. IPCC AR6
- **Climate change impacts studies**
e.g. EU-funded research projects
- **Expert elicitation**
e.g. Expert Advisory Group
- **Stakeholder engagement**
e.g. Commission Working Group

EUCRA Interactive viewer – beta version (internal)

Purpose: visualize and download information that support the climate risk analysis within EUCRA

Domain: Europe

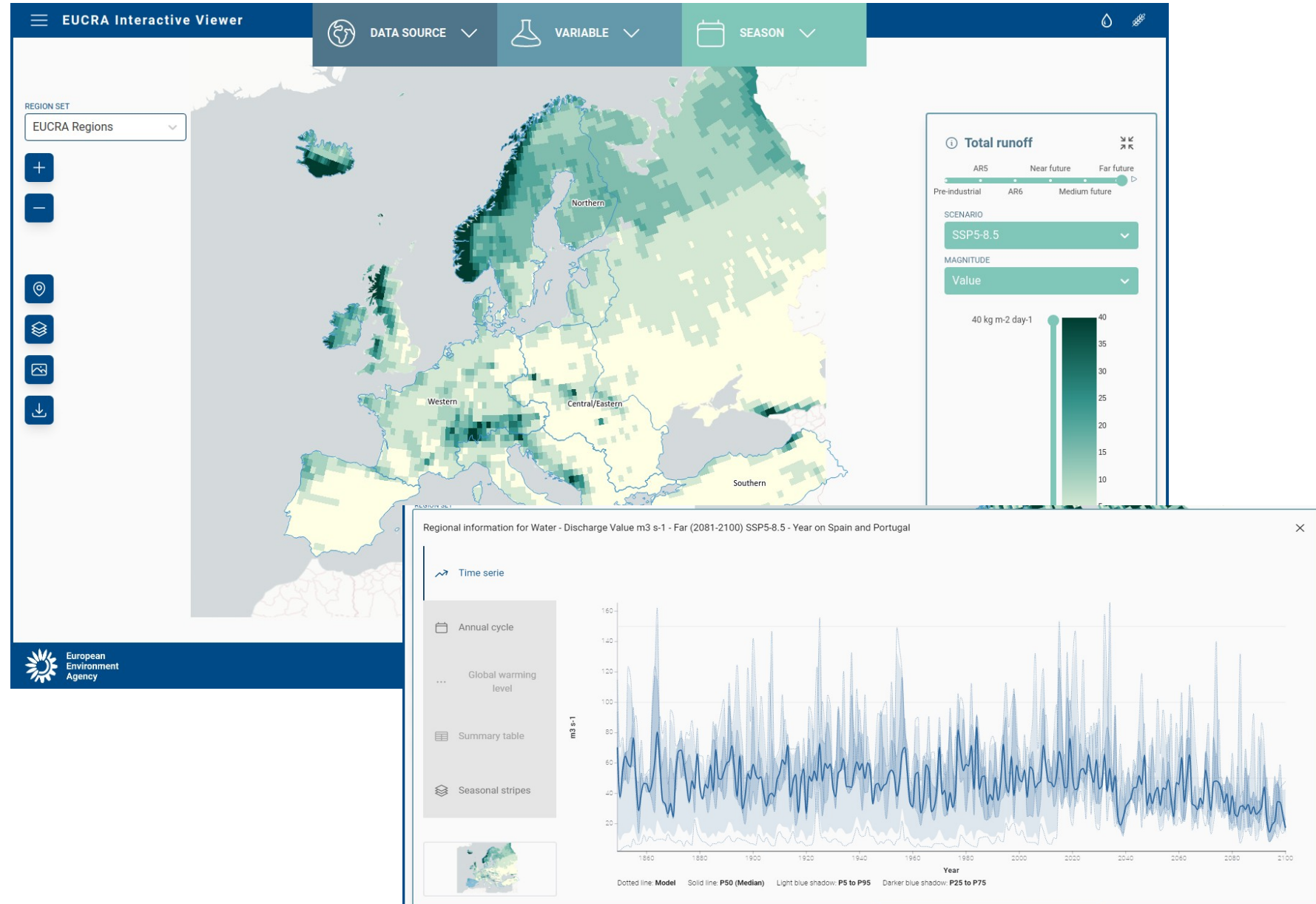
1st set: User-driven selection of ISIMIP variables

Next: additional ISIMIP variables, possibly include climate impact drivers, non-climatic drivers, exposure, vulnerability

eea-eucra.predictia.es

Username: predictia

Password: demo



FUCRA Interactive viewer - beta version



https://protocol.isimip.org/#42-output-variables



Homepage > Output Data

Output Data

Access the ISIMIP repository

Read how to access the ISIMIP output data [here](#).

The table below contains the list of all impacts simulations data sets available from ISIMIP. Not all of them might be already publicly available on our ISIMIP repository, but they all have at least been submitted to the DKRZ server where they are available for the ISIMIP participants (see our [Terms of use](#)).

Note: As of January 2020, all Fast Track data is no longer publicly available (see more [here](#)).
Note: Data changes for previous simulation rounds are archived in the [ISIMIP2 caveat log](#) and the [Fast Track caveat log](#).

- Data marked with '(*)' in the Experiments-Column are not yet publicly available.
- For **changes** to ISIMIP3 output data, please refer to the [caveat log](#) in the ISIMIP repository.

← Previous
1 2 3
Next >

Sector	Model	Simulation rounds	Experiments	Climate drivers	Date
Water (global)	WEB-DHM-SG	ISIMIP3b	(*) ssp126_2015soc_default, ssp585_2015soc_default, picontrl_histsoc_default, picontrl_2015soc_default, ssp370_2015soc_default, historical_histsoc_default, historical_2015soc_default, ssp585_2015soc_2015co2	GFDL-ESM4, IPSL-CM6A-LR, MPI-ESM1-2-HR, MRI-ESM2-0, UKESM1-0-LL	2023-05-16

- Variable long name
- Hydrological Variables
- Water management Variables
- Agricultural Variables
- Carbon Pools
- Carbon Fluxes
- Nitrogen Pools
- Nitrogen Fluxes
- Vegetation Cover & Structure
- Fire variables
- Peatland variables
- Forestry Variables
- Hydrothermal Variables
- Water Quality Variables
- Albedo
- Biodiversity Variables
- Fisheries and Marine Ecosystems
- Temperature-related Mortality

Data sources

Fisheries

- Total Consumer Biomass Density (**tcb**)
- Total Catch (commercial groups / size classes) (**tc**)

Biomes

- Carbon Mass in Vegetation (**cveg-total**)
- Carbon Mass in Above Ground Vegetation Biomass (**cvegag-total**)
- Carbon Mass Flux out of Atm. due to Net Primary Production on Land (**npp-total**)
- Carbon Mass Flux out of Atm. due to Net Biospheric Production on Land (**nbp-total**)
- Leaf Area Index (**lai-total**)
- Burnt Area Fraction (**burntarea-total**)

**Instead of using the total it may also make sense to show the results per plant functional type (pft)*

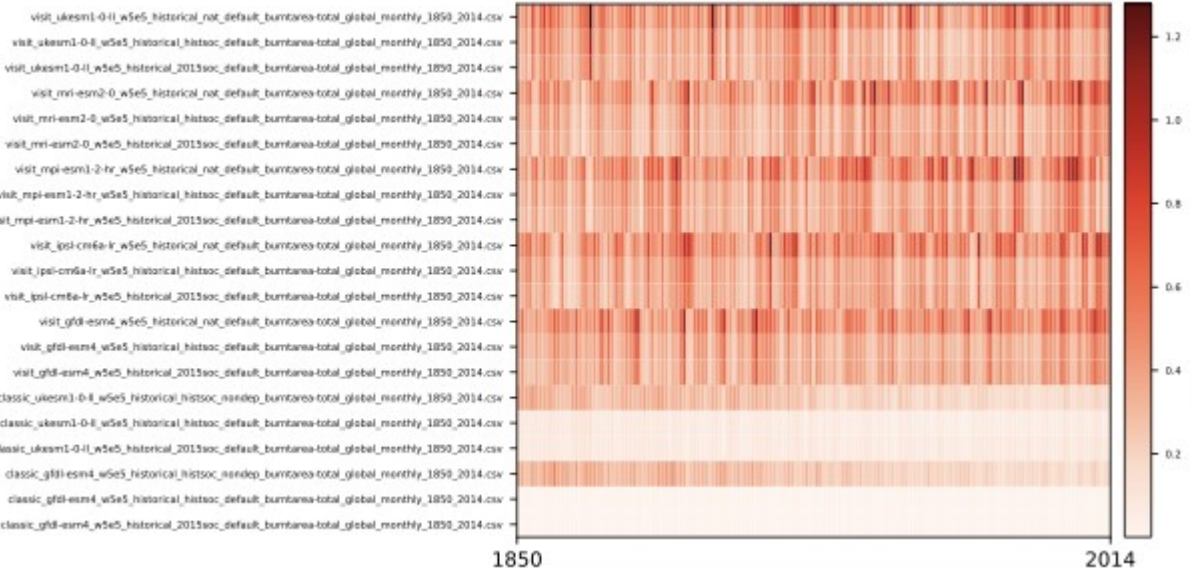
Agriculture: Crop production (**not ready**)

Water: discharge (**dis**), runoff (**qtot**)

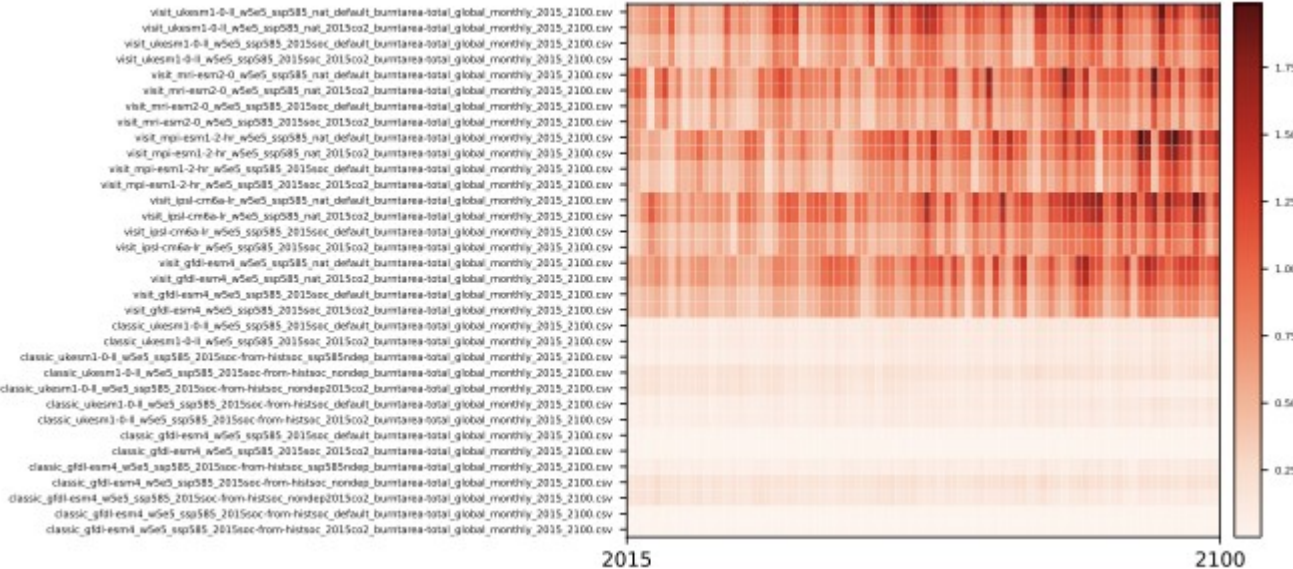
Which **additional variables** from these sectors could provide robust information for EUCRA?

Data sources

burntarea-total_historical_MED



burntarea-total_ssp585_MED



Potential: ISIMIP viewer (not EEA funded)

Spin-off of EUCRA version (open source)

Global coverage

Inclusion of further ISIMIP variables (without EEA involvement)

Call to action



- Please help us identifying **additional variables** from ISIMIP3b simulations that are in post-processing to add to the EUCRA viewer (robustness and suitability check)
- As soon as possible, but latest by early September
- Please let us know if simulations for **additional sectors** are already in an advance stage

For more information on EUCRA:

Visit the [EUCRA webpage](#) on Climate-ADAPT

Contact us: EUCRA@eea.europa.eu