



DEPARTMENT OF GLOBAL HEALTH
UNIVERSITY *of* WASHINGTON



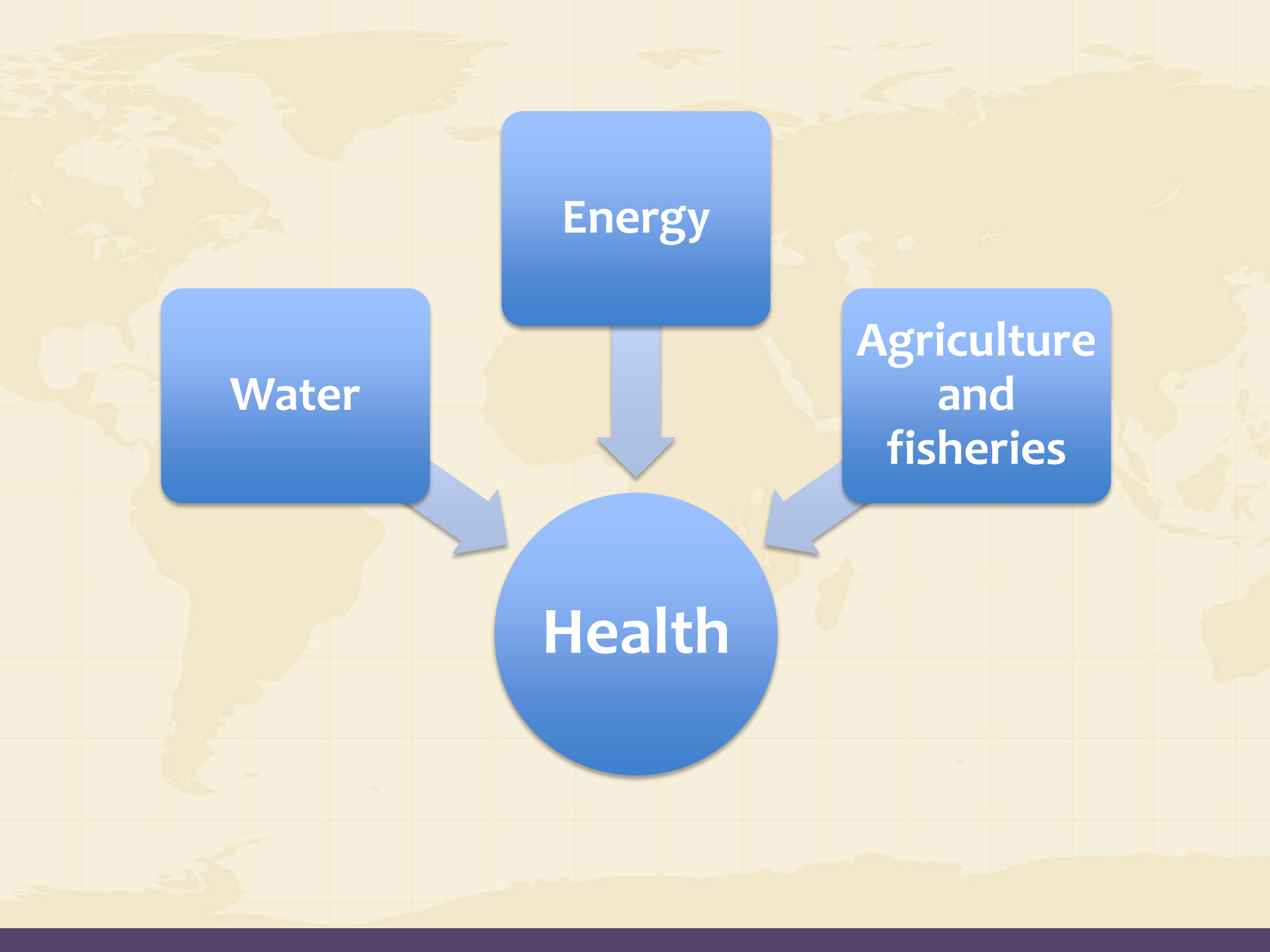
SCHOOL OF PUBLIC HEALTH
UNIVERSITY *of* WASHINGTON

Water

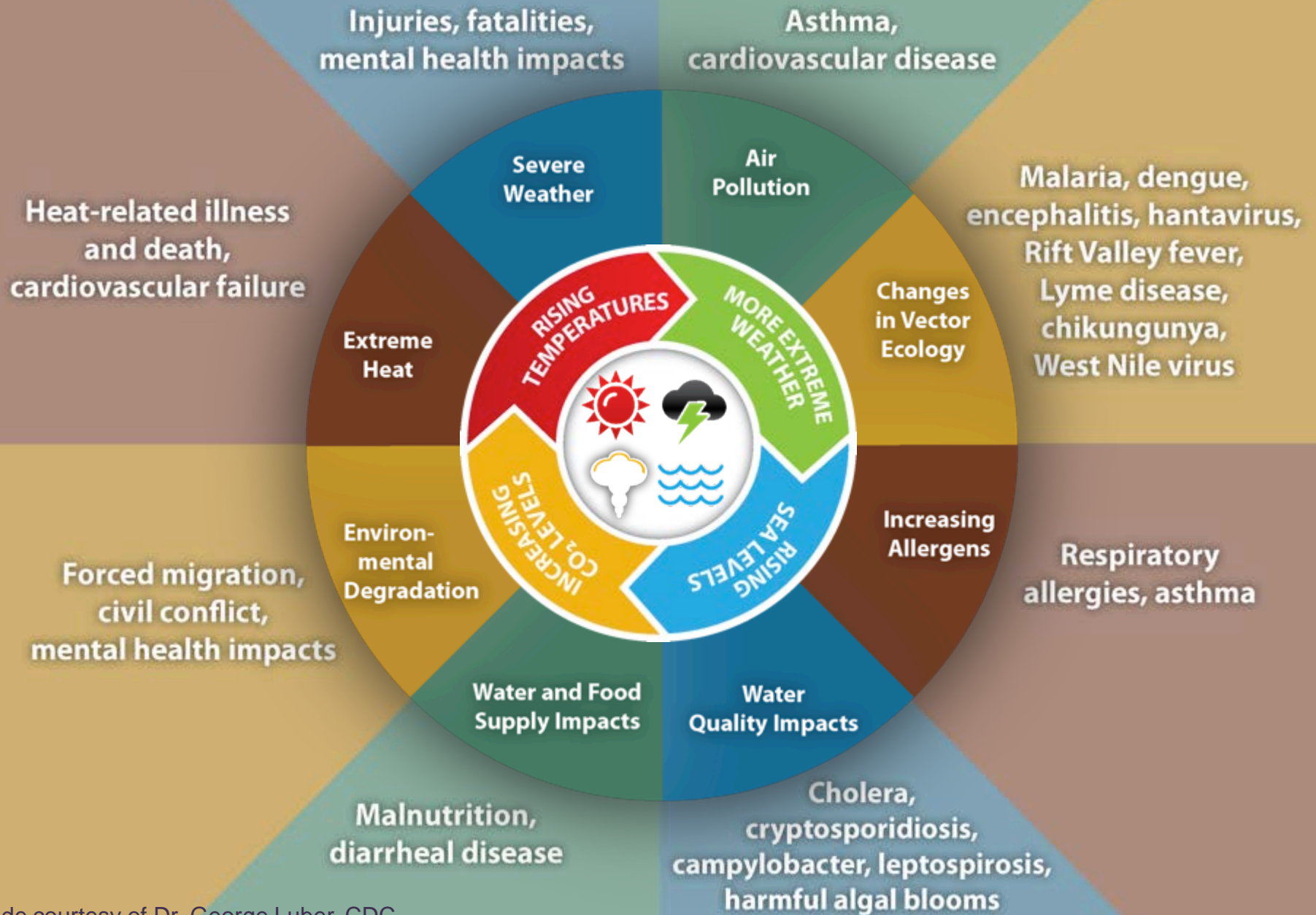
Energy

**Agriculture
and
fisheries**

Health



Impact of Climate Change on Human Health

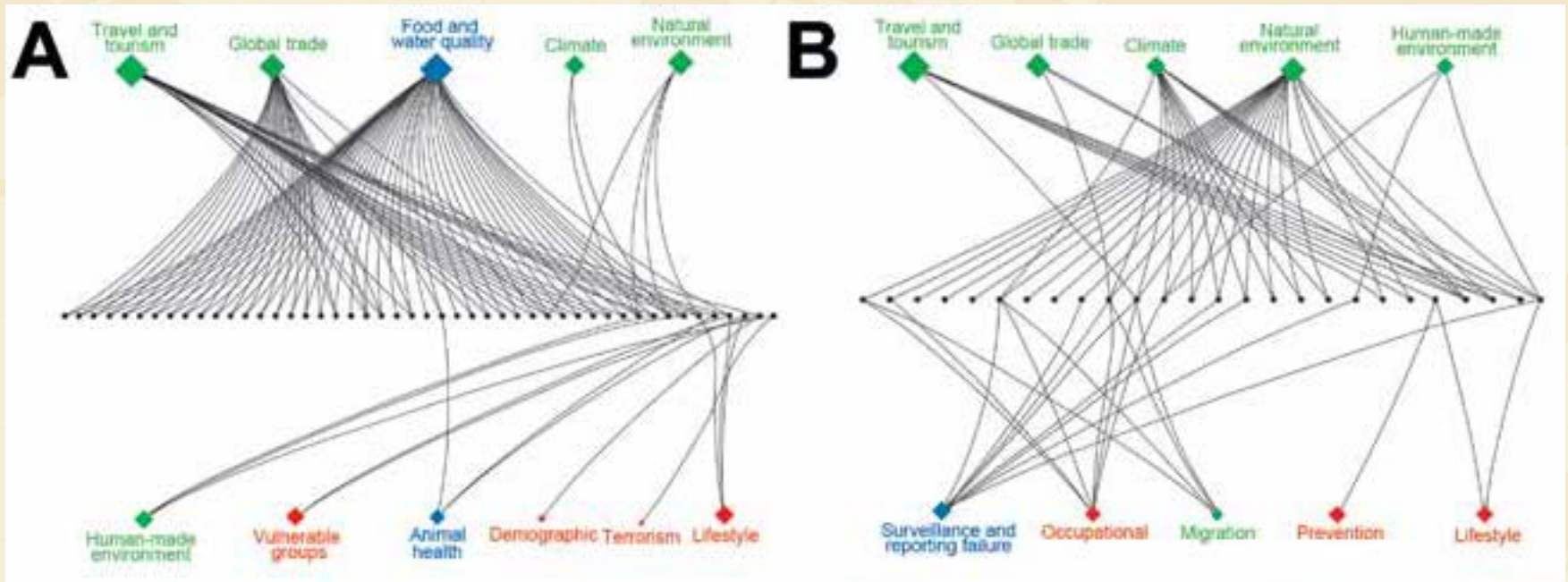




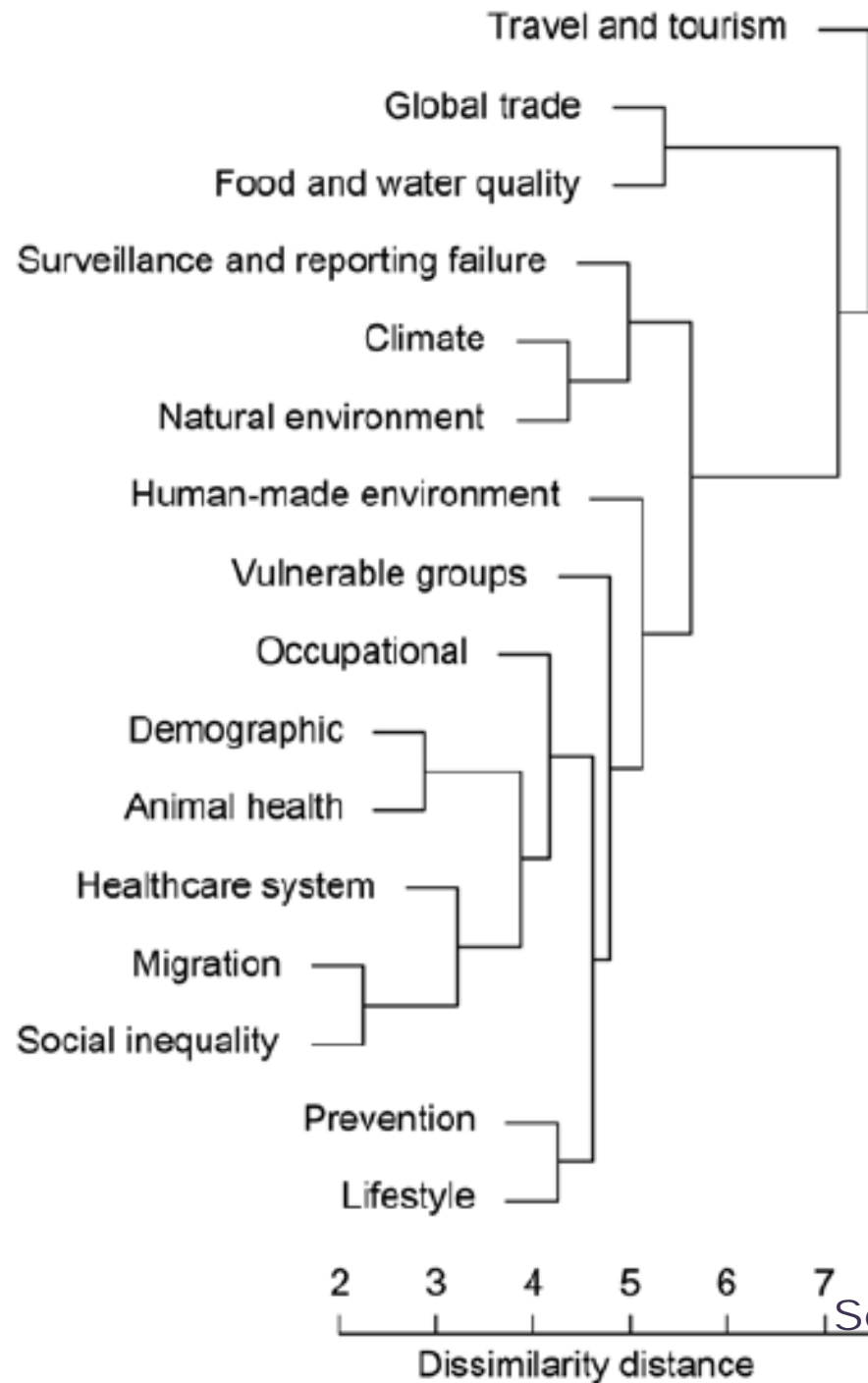
AT THE GATES.
Our safety depends upon official vigilance.

- **Reduce exposures**
 - Legislative policies
 - Alterations in built environment
 - Alterations in natural environment
- **Prevent onset of adverse outcomes**
 - Early warning systems
 - Surveillance and monitoring
 - Vector control programs
 - Public education and outreach
- **Response / treatment**
 - Medical training and awareness
 - Treatment
 - Emergency response

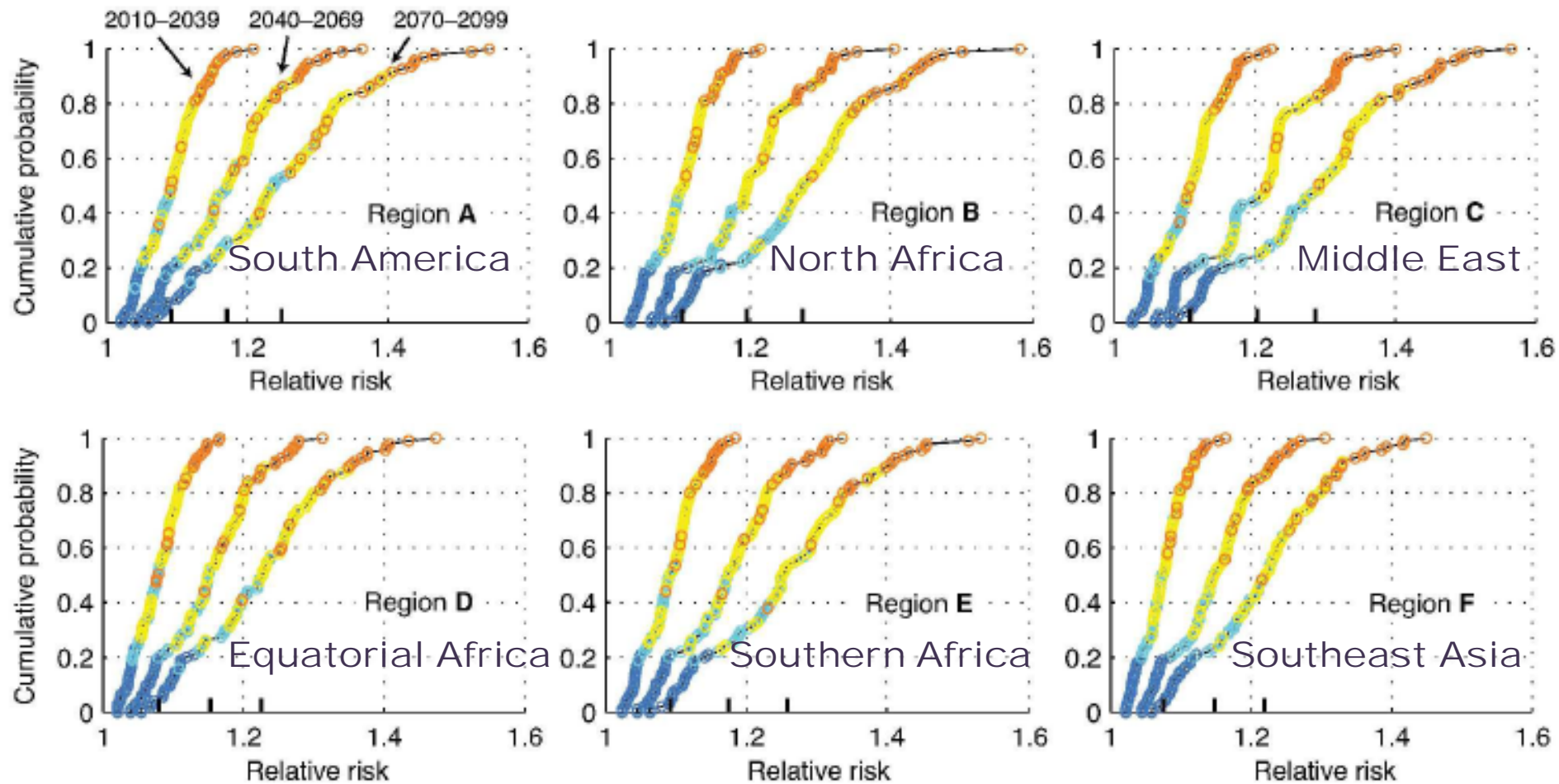
Infectious disease treats by drivers, Europe 2008-2013



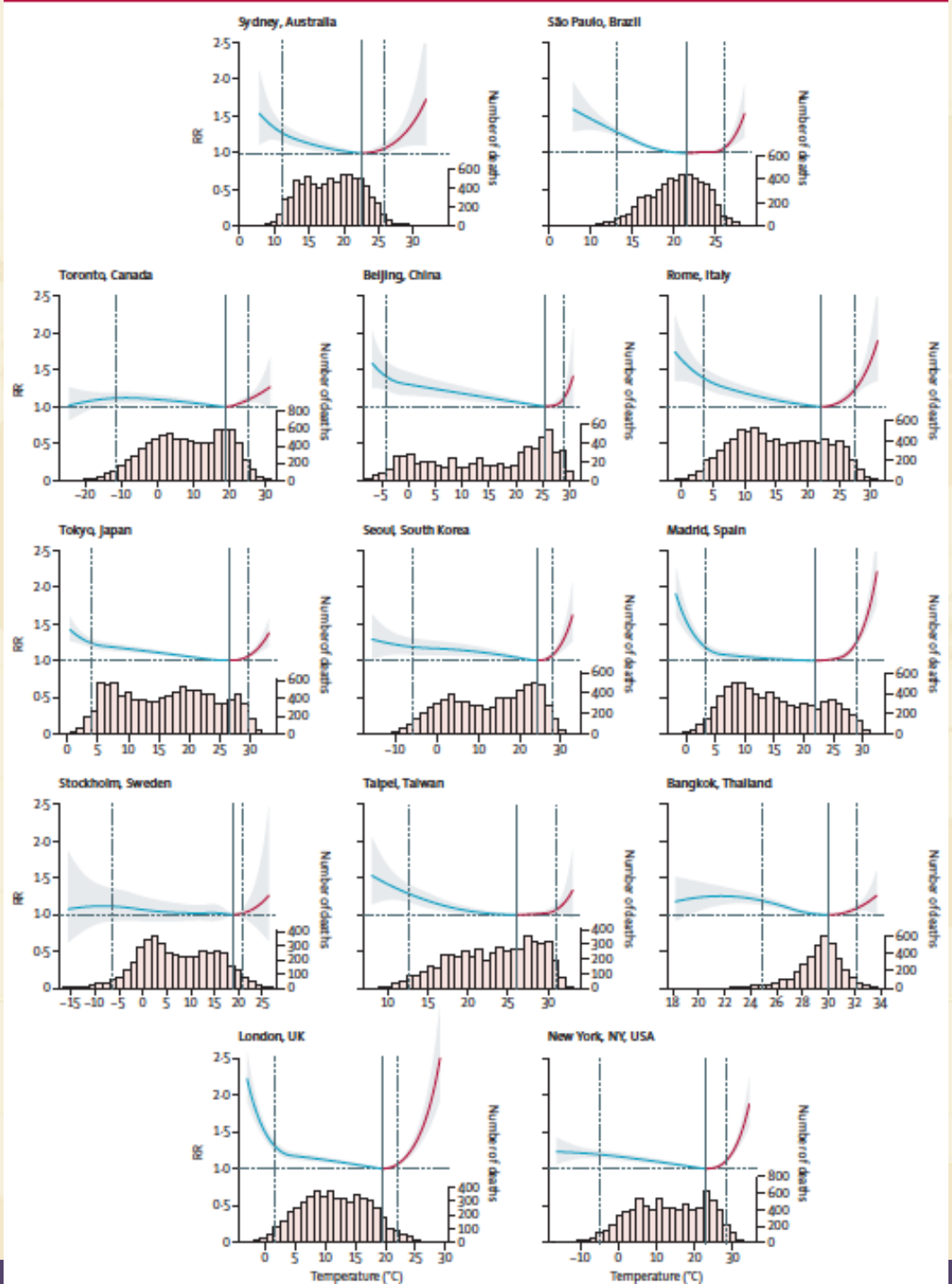
Cluster dendrogram from hierarchical cluster analysis of drivers of IDTEs, Europe 2008-2103



Risk of diarrheal disease with climate change

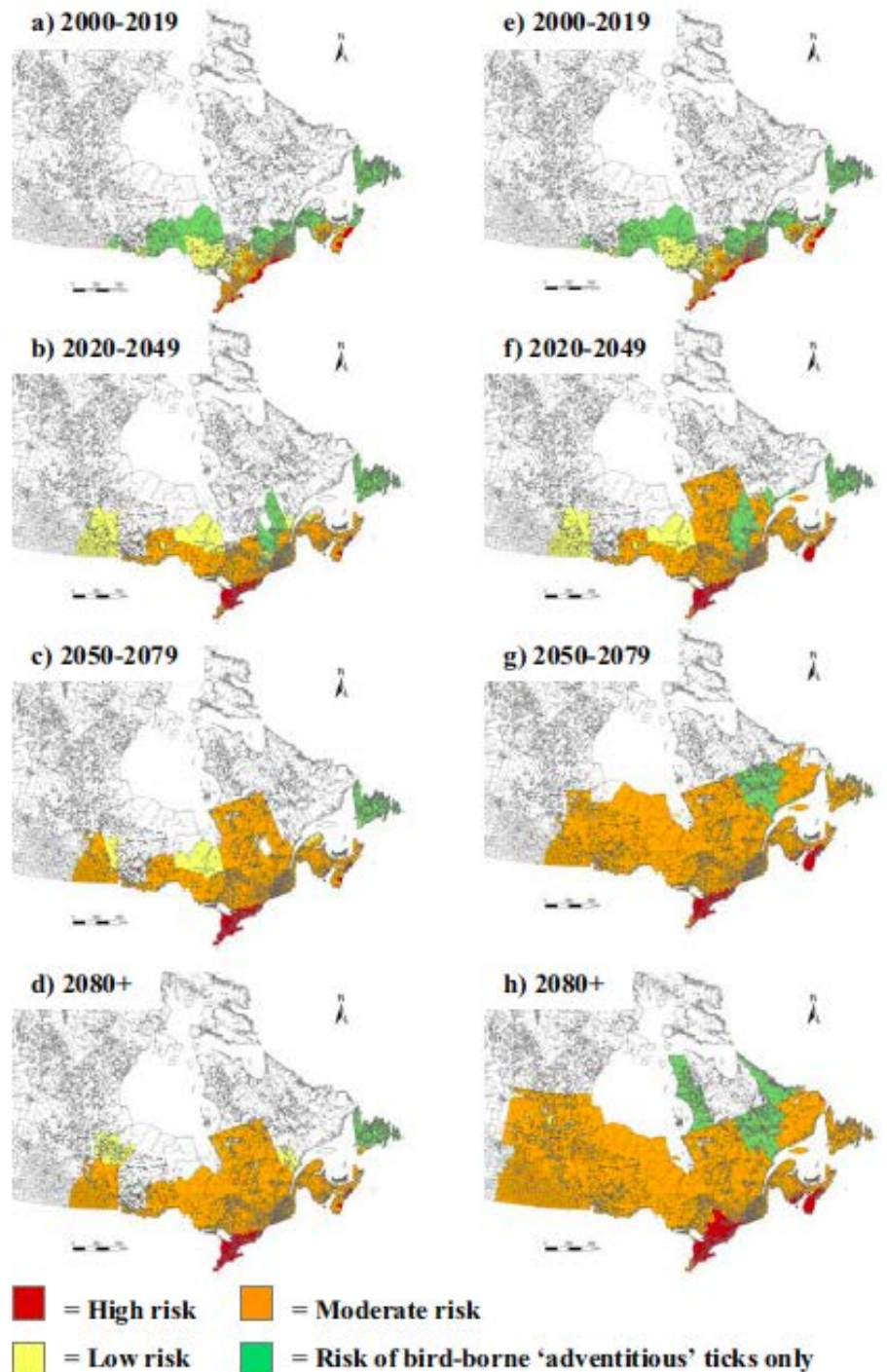


Temperature -mortality relationships in 13 cities

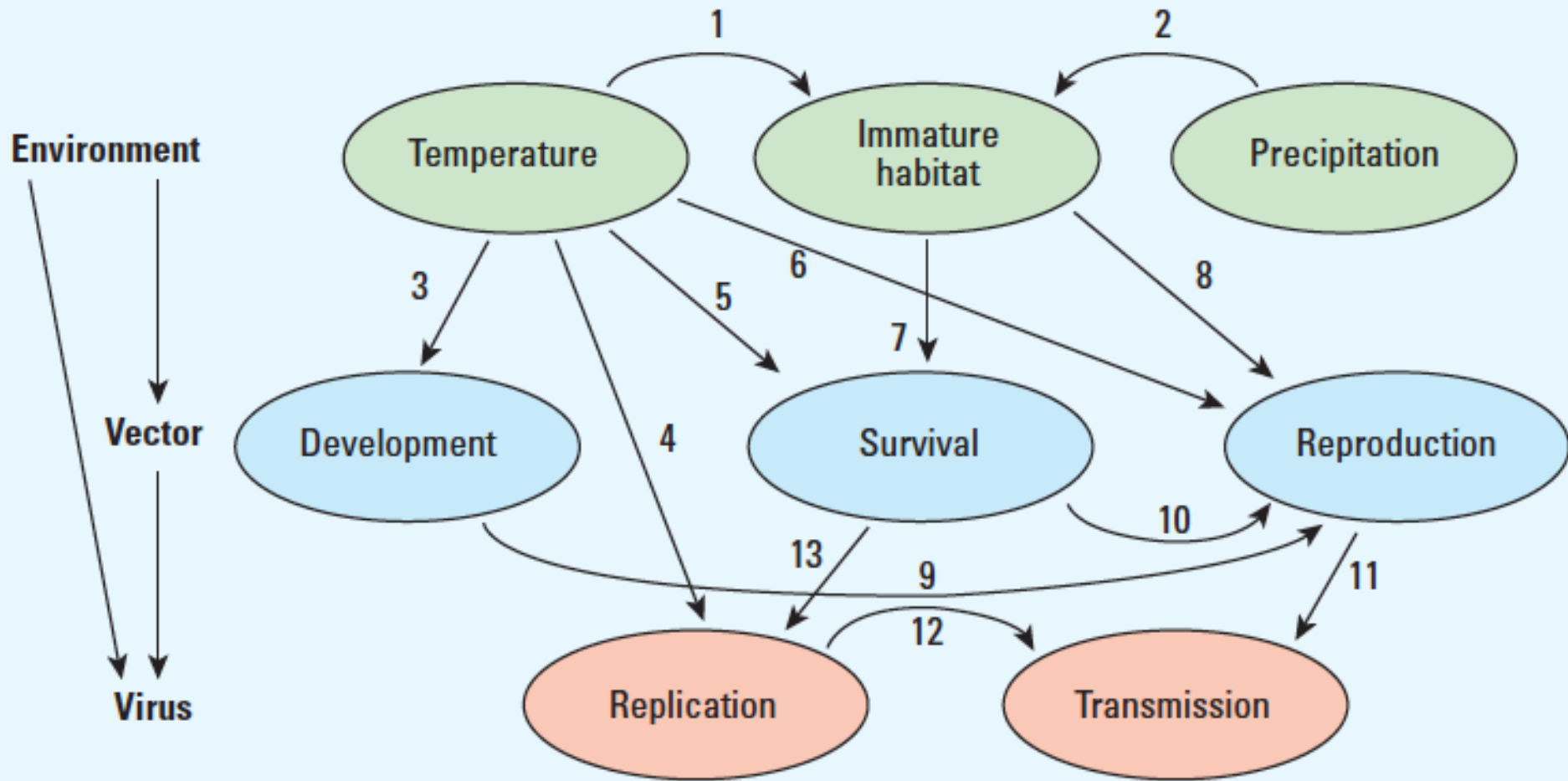


Risk maps for the occurrence of the Lyme disease vector from 1971-2000 to 2080s; slow and fast scenarios

Ogden et al. 2008

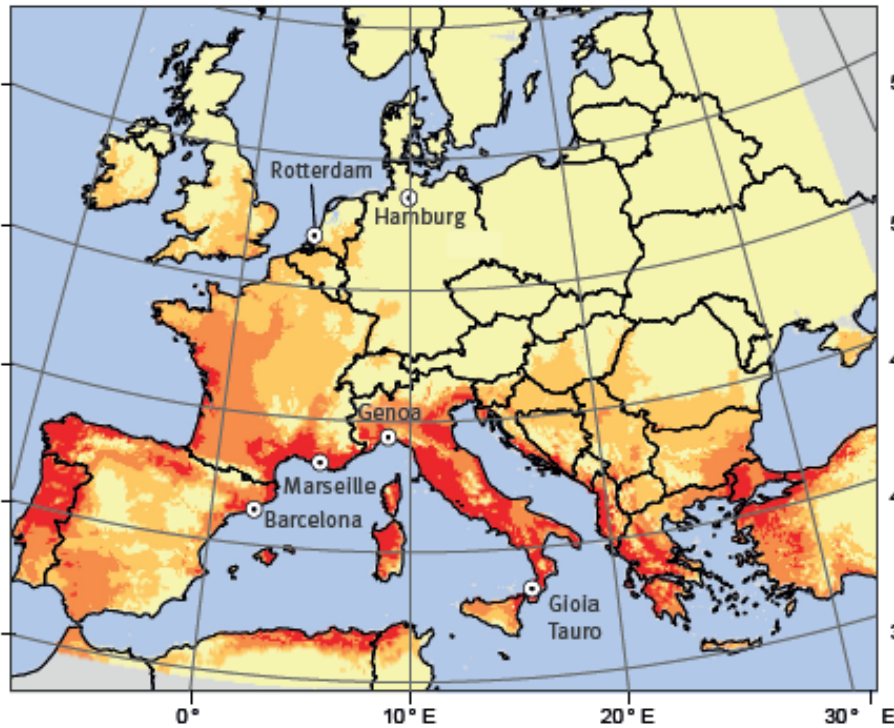


Biophysical influences on dengue ecology showing the interactions between climate variables, vectors, and the virus

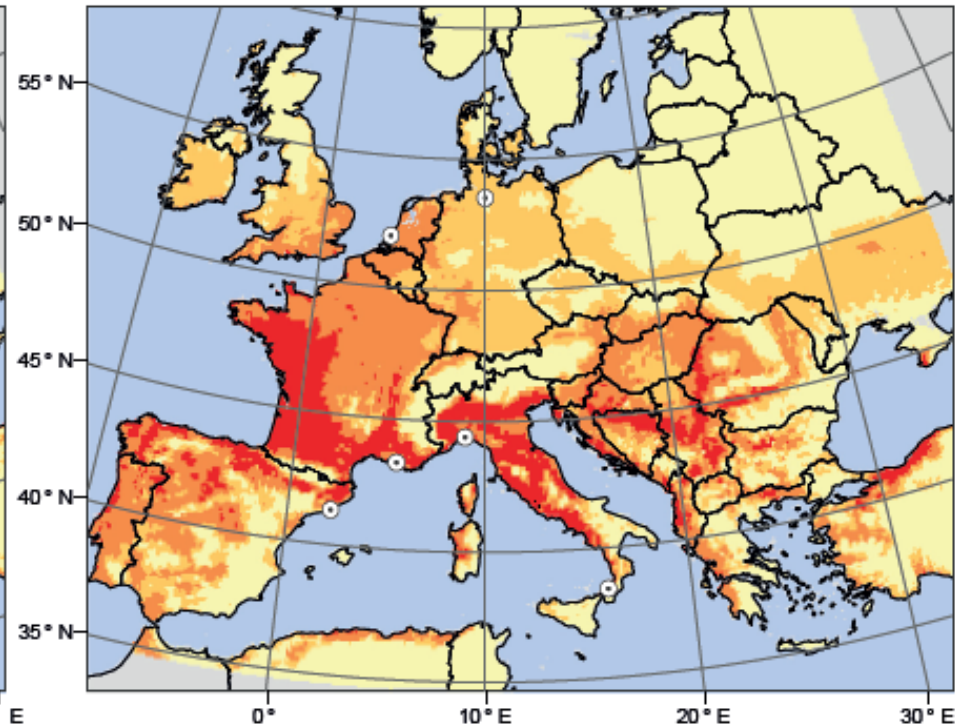


Climate suitability of *Aedes albopictus* in Europe, end 20th century vs 2011-2040

A. End of the 20th century



B. 2011-2040



Climatic suitability for *A. albopictus*

0.00-0.20 0.21-0.40 0.41-0.60 0.61-0.80 ⊙ Harbours





SALES

ANY TIRE
in This Rack
\$25
Air Included

ANY TIRE
in This Rack
\$50
Air Included

ANY TIRE
in This Rack
\$100
Air Included

USE

Climate change



- Increases in temperature and extreme events
- Changes in precipitation and soil moisture

Increasing carbon dioxide concentrations



- Decreased crop concentrations of
- Iron
 - Zinc
 - Protein

- Changes in the quality and quantity of crops
- Increases in pests and pathogens, resulting in more pesticide use
- Reduced water quality
- Increased infectious disease risks
- Interrupted food and social networks

AHMEDABAD HEAT ACTION PLAN 2013

GUIDE TO EXTREME HEAT PLANNING IN AHMEDABAD, INDIA



