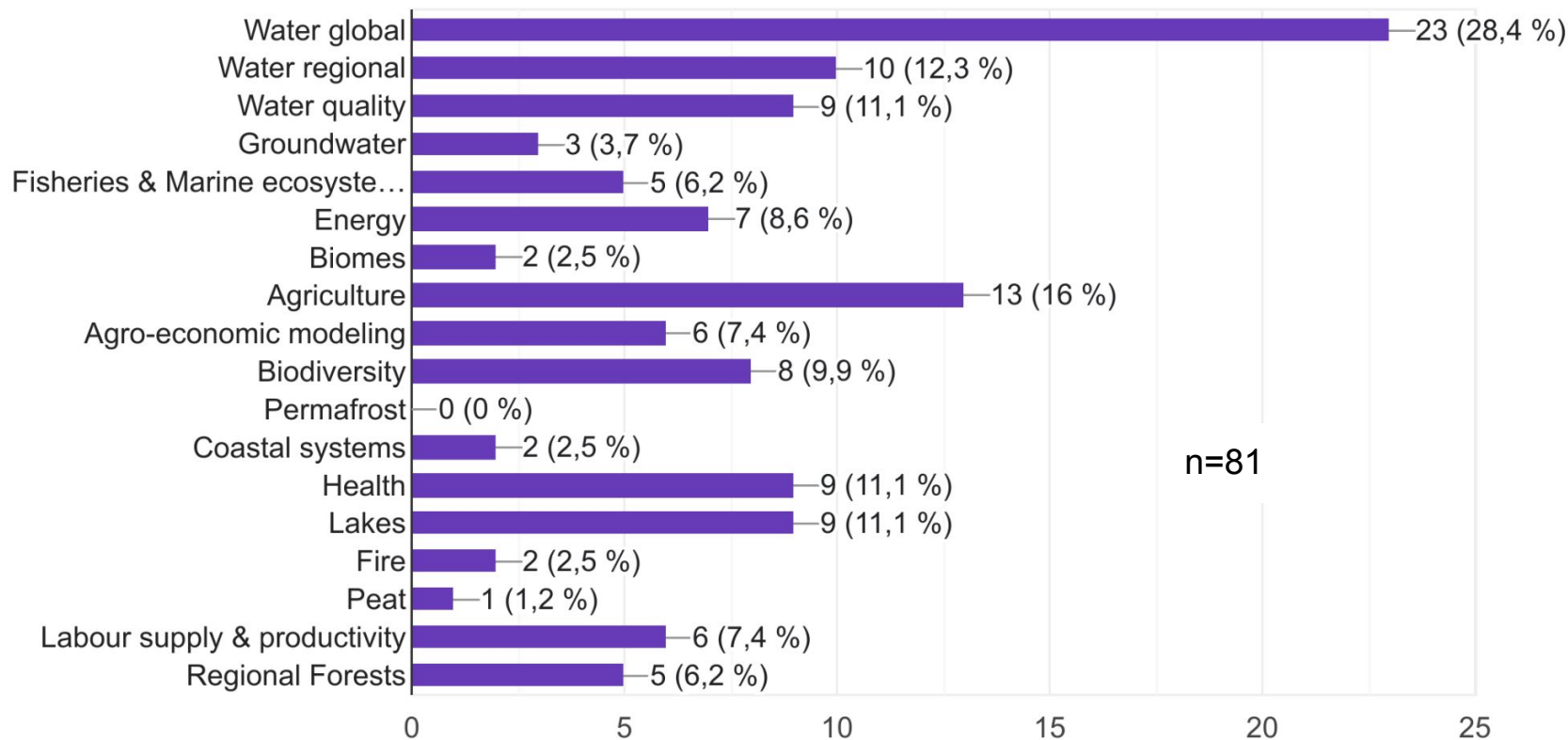


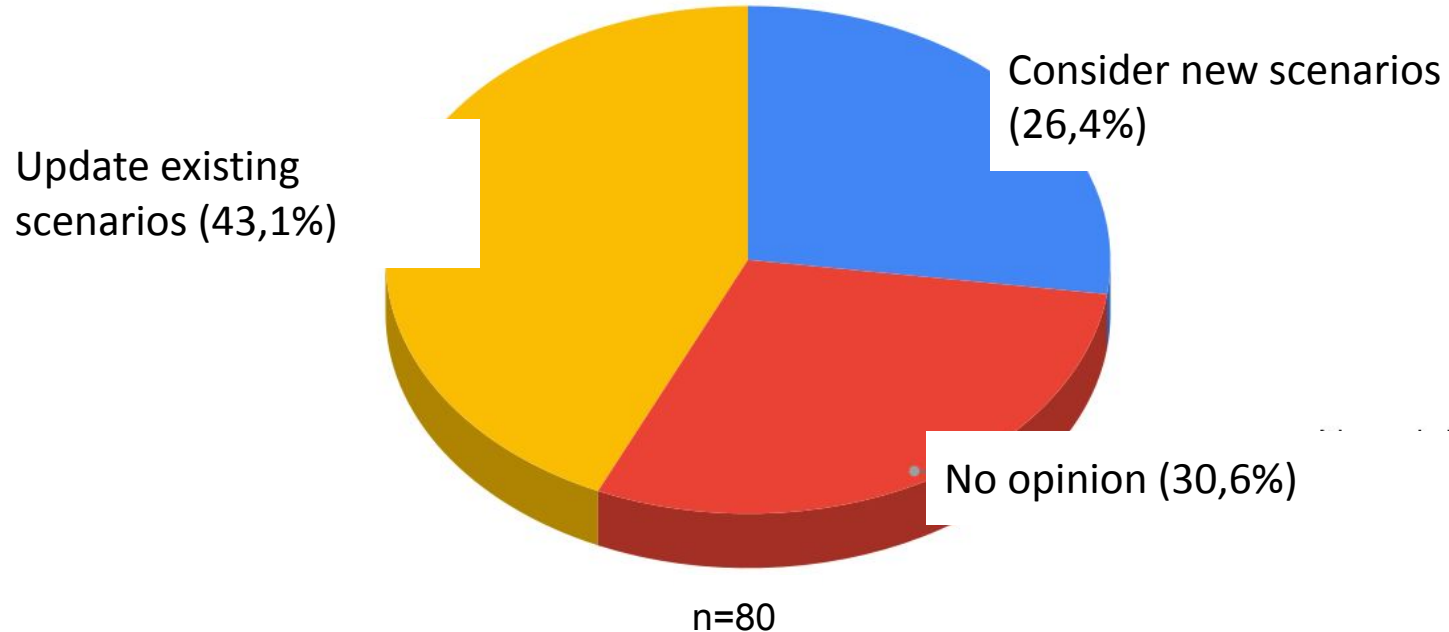
Results of a survey among impact modelers to identify
their scenario preferences with respect to the
CMIP7/ScenarioMIP process

(June 2023)

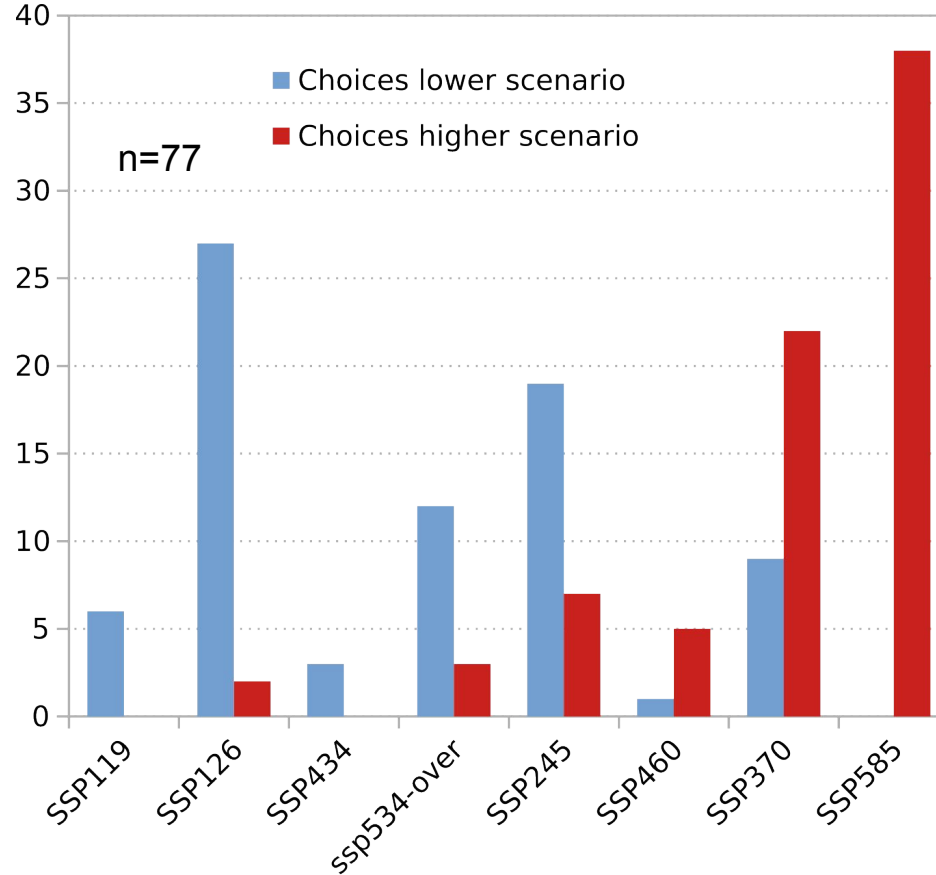
What sector do you most identify with?



Should CMIP7 consider new scenarios or update the existing ones based on the next generation of ESMs?



If you could only select two scenarios for CMIP7 which ones would you use?



If you can only set **one** priority to improve the CMIP6 Tier 1 simulations (ssp585, ssp370, ssp245, ssp126) where would you set it?

